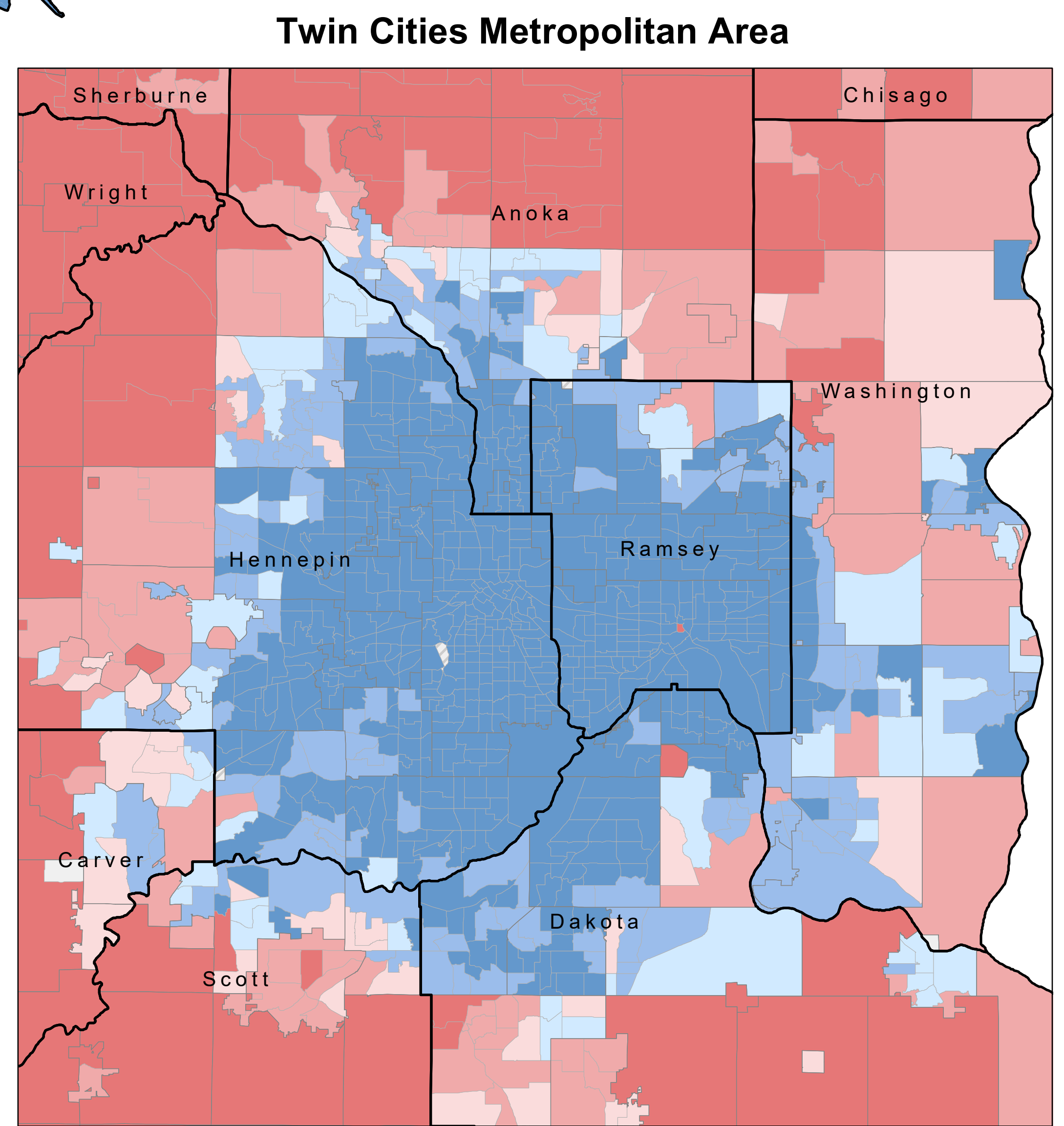
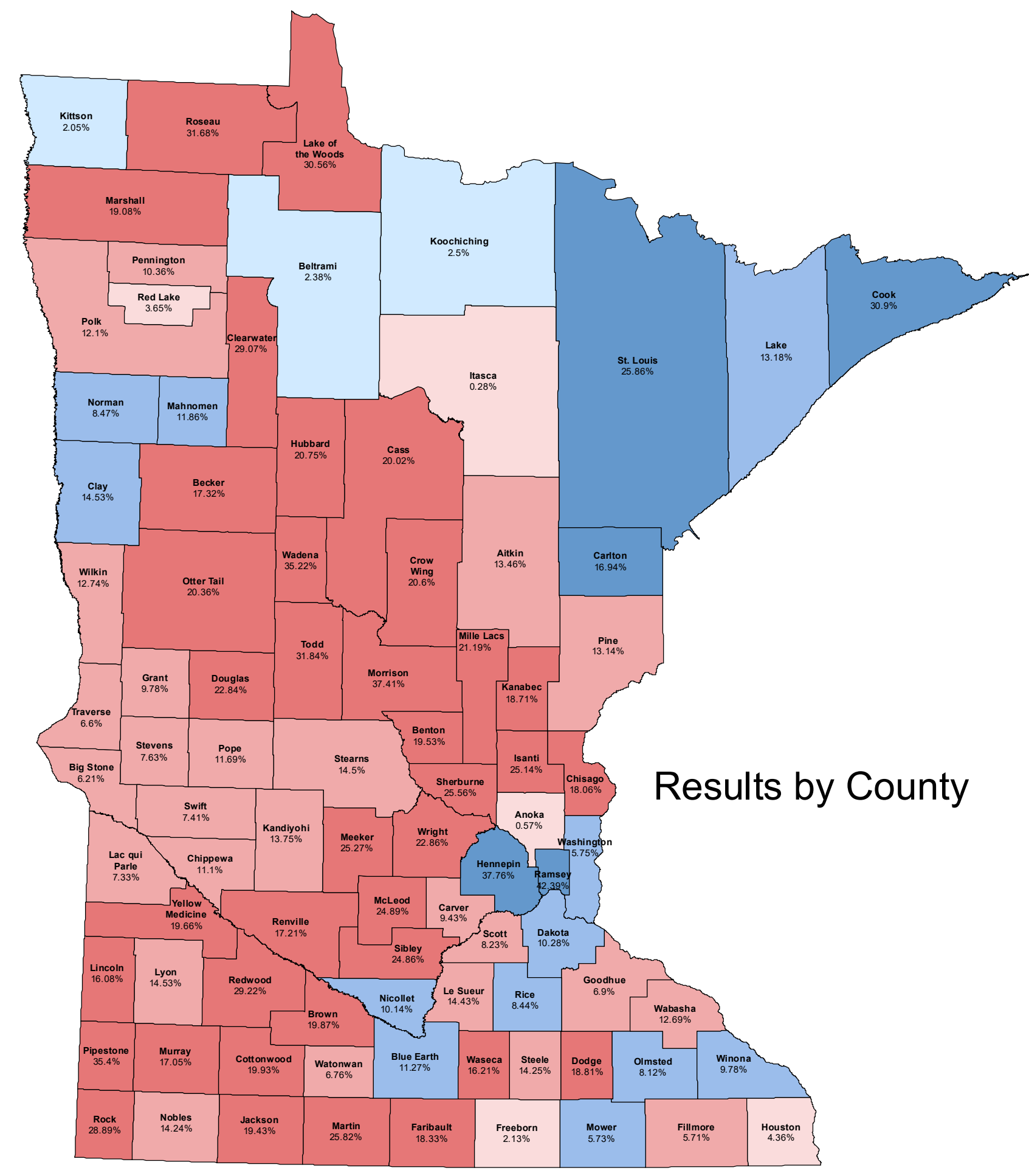
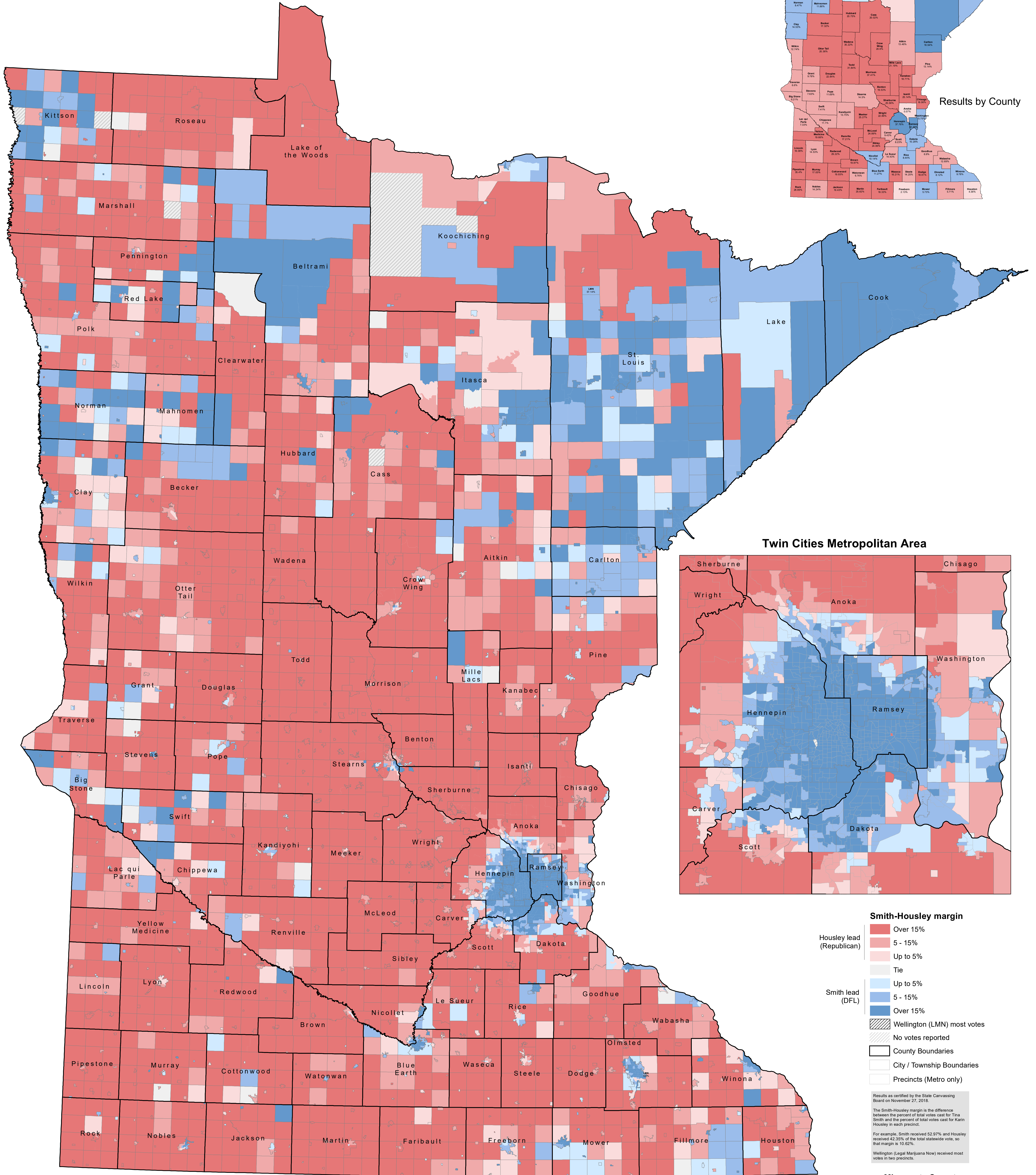


2018 Special Election for U.S. Senate

Smith-Housley Margin by Precinct

Official Results



Smith-Housley margin

- Over 15%
- 5 - 15%
- Up to 5%
- Tie
- Up to 5%
- 5 - 15%
- Over 15%
- Wellington (LMN) most votes
- No votes reported
- County Boundaries
- City / Township Boundaries
- Precincts (Metro only)

Results as certified by the State Canvassing Board on November 27, 2018.

The Smith-Housley margin is the difference between the percent of total votes cast for Tina Smith and the percent of total votes cast for Karin Housley in each precinct.

For example, Smith received 52.97% and Housley received 42.35% of the total statewide vote, so that margin is 10.62%.

Wellington (Legal Marijuana Now) received most votes in two precincts.