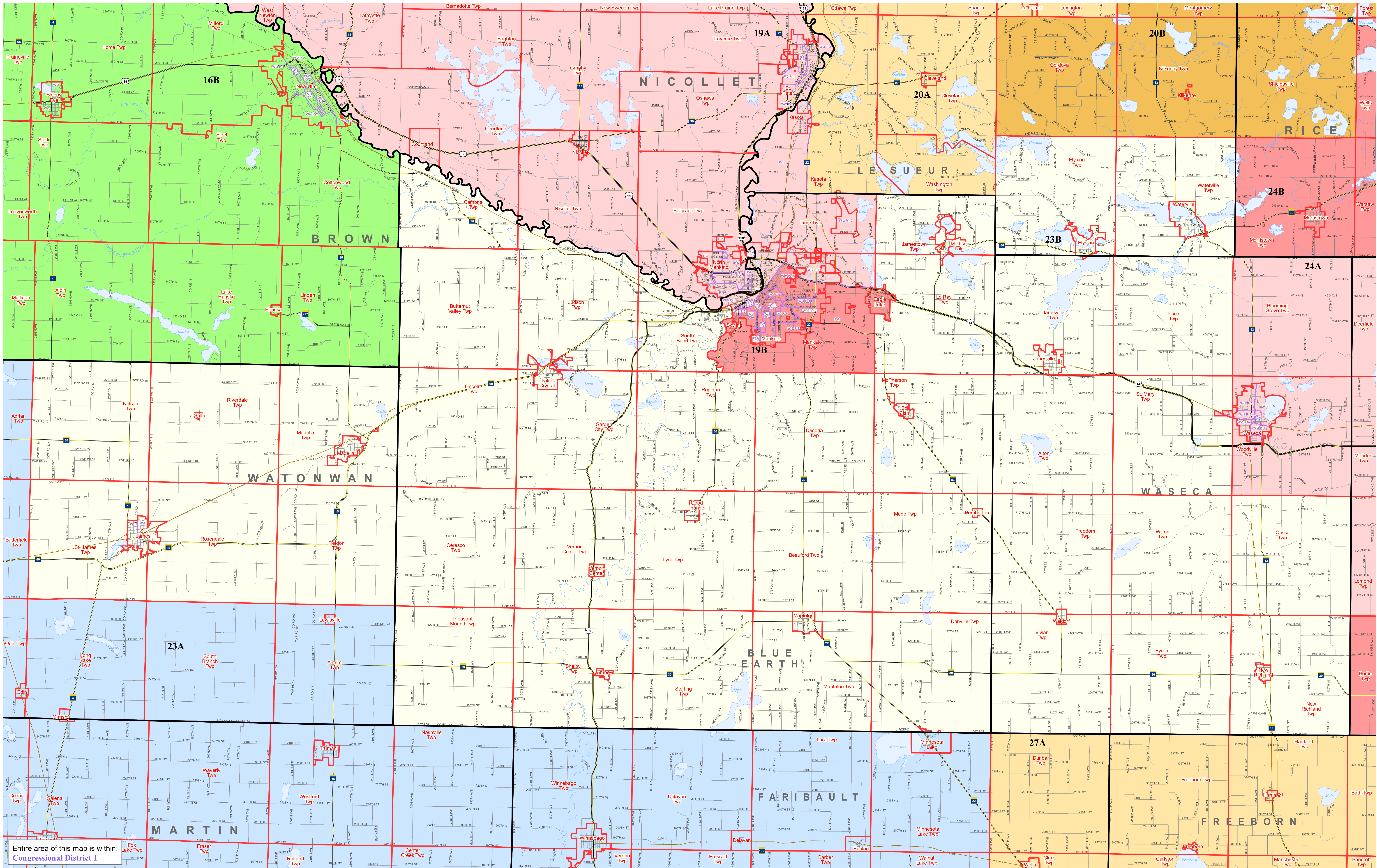
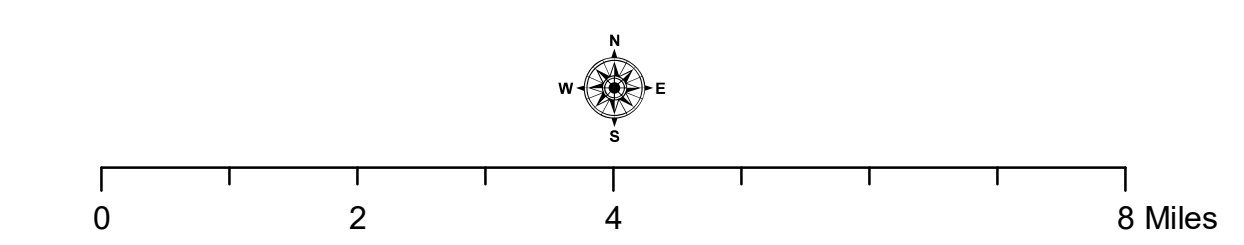
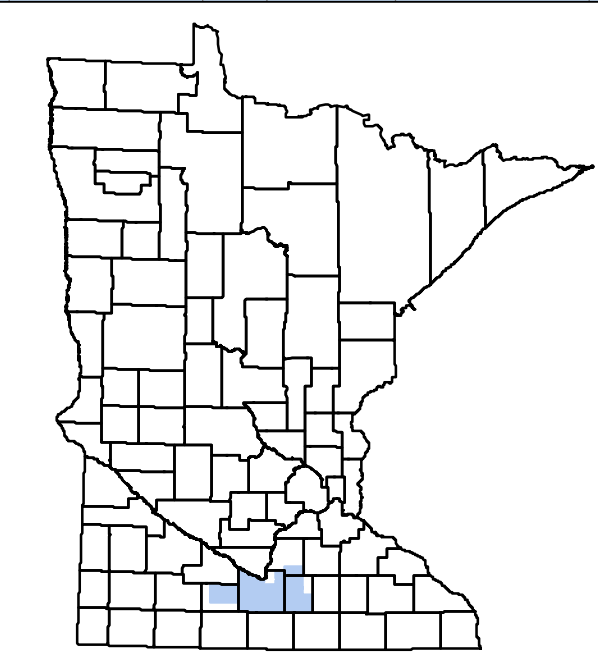


# House District 23B



Entire area of this map is within:  
**Congressional District 1**

- C.D.1 Congressional Districts
- CLAY County Boundaries
- Ely City / Township Boundaries
- P-1 Precincts
- Shaded areas represent legislative districts
- Rice Lakes / Rivers
- Interstate Highways
- US Highways
- State Highways
- Streets
- Railroads



This map shows the Congressional and Legislative Districts ordered by the Special Redistricting Panel in the matter of *Hogart et al. v. Ritchie et al.*, No. A11-152, on February 21, 2012, as corrected under Minnesota Statutes 2.01, subd. 2 or adjusted under Minnesota Statutes 204B.146, subd. 3. House districts that fall in the same Senate district use different shades of the same color. Precinct boundaries are maintained by the Secretary of State, derived from MnGeo and U.S. Census data. Precinct boundaries in unorganized territories are those established by county boards and may not align with the unorganized territory boundaries from MnGeo and U.S. Census. Precinct boundaries are current as of the date above, but visit the [Posting Place Finder](http://postings.sos.state.mn.us) for definitive precinct and district information for a particular address: <http://postings.sos.state.mn.us>. Only those municipalities with multiple precincts have precinct labels. Road data is from Mn/DOT and U.S. Census. (Statewide) and MCompass (Metro). Rail data is from Mn/DOT. Water data is from MN DNR.