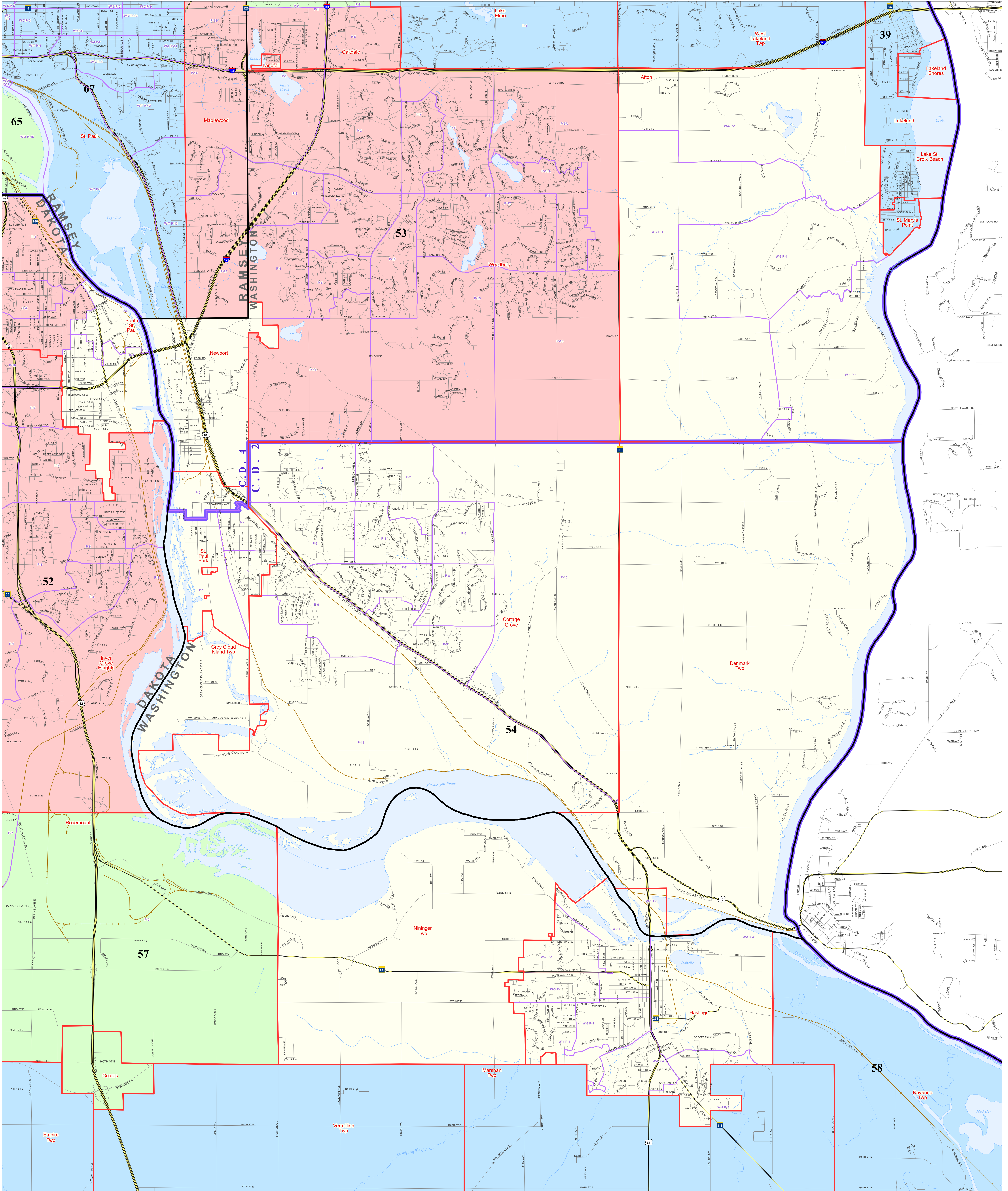
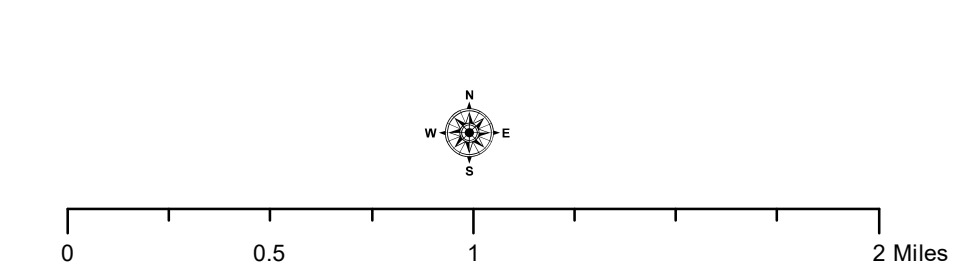
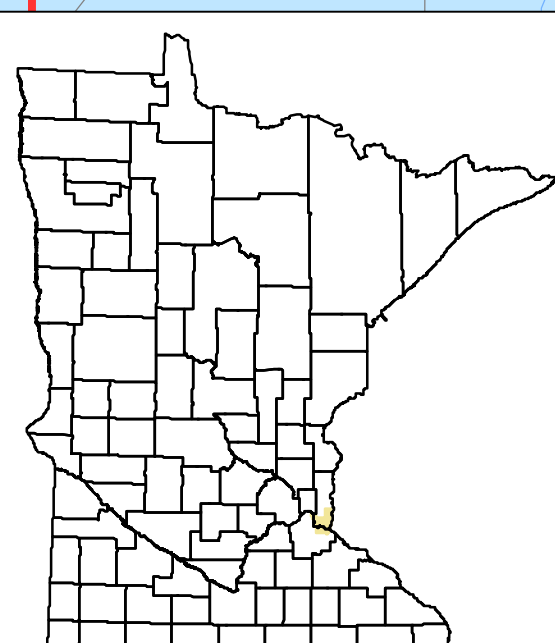


Senate District 54



- C.D. 1 Congressional Districts
- CLAY County Boundaries
- Ely City / Township Boundaries
- P-1 Precincts
- Shaded areas represent Senate Districts
- ~ Rice Lakes / Rivers
- Interstate Highways
- US Highways
- State Highways
- Streets
- Railroads



Minnesota Secretary of State
 Elections Division
 November 2017

This map shows the Congressional and Legislative Districts ordered by the Special Redistricting Panel in the matter of *Hogart, et al. v. Ritchie, et al.*, No. A11-152, on February 21, 2012, as corrected under Minnesota Statutes 2.81, subd. 2, or adjusted under Minnesota Statutes 20AB146, subd. 3. House districts that fall in the same Senate district use different shades of the same color. Precinct boundaries are maintained by the Secretary of State, derived from MnGeo and U.S. Census data. Precinct boundaries in unorganized territories are those established by county boards and may not align with the unorganized territory boundaries from MnGeo and U.S. Census. Precinct boundaries are current as of the date above, but visit the Polling Place Finder for definitive precinct and district information for a particular address: <http://pollfinder.sos.state.mn.us> Only those municipalities with multiple precincts have precinct labels. Road data is from MnDOT and U.S. Census (Streets) and NCompass (MnGeo). Rail data is from MnDOT. Water data is from MN DNR.